

# Figaroo™

## **S39 Wireless, Wearable Breast Pump User Manual**



<b>Product</b>	<b>Figaroo Wearable Breast Pump</b>
<b>Model</b>	S39
<b>Manufacturer</b>	Shenzhen TPH Technology Co., Ltd.
<b>Address</b>	Room 203, 2nd Floor, 29th Building, Lianchuang Technology Park, No. 21 Bulan Road, Xialilang Community Nanwan Street, Longgang District, Shenzhen Guangdong, CN 518115
<b>Service Line</b>	+86-755-82703212

## **U.S. Distributor: Figaroo, LLC**

260 Madison Avenue, 8th Floor  
New York, NY, 10016  
1-855-288-6181  
[www.myfigaroo.com](http://www.myfigaroo.com)

# TABLE OF CONTENTS

<b>1.OVERVIEW</b> .....	<b>3</b>
INTRODUCTION .....	3
INDICATIONS FOR USE .....	3
IMPORTANT SAFETY INFORMATION .....	3
IMPORTANT USE GUIDELINES .....	5
USAGE AND OPERATING LIFE .....	5
PRODUCT DESCRIPTION / WHAT'S INCLUDED .....	5
CONTROL PANEL .....	6
<b>2.GETTING STARTED</b> .....	<b>7</b>
ASSEMBLY .....	7
<b>3.PUMPING</b> .....	<b>9</b>
BEFORE PUMPING .....	9
TO BEGIN PUMPING .....	9
PUMPING POSITION .....	14
BRA BUCKLE INSTRUCTIONS .....	14
<b>4.ENDING YOUR SESSION</b> .....	<b>15</b>
<b>5.CLEANING, DISINFECTION &amp; STORAGE</b> .....	<b>17</b>
CLEANING AND DISINFECTION .....	17
CLEANING BY HAND .....	17
MILK STORAGE GUIDELINES .....	18
BREAST MILK COLD STORAGE .....	18
UNFREEZING BREAST MILK .....	18
BREAST MILK HEATING .....	18
<b>6.CHARGING YOUR BREAST PUMP</b> .....	<b>19</b>
BATTERY STATUS INDICATOR ILLUSTRATION .....	19
CHARGING TIMES .....	19
TIPS TO HELP YOU SUCCEED .....	20
<b>7.TROUBLESHOOTING</b> .....	<b>21</b>
<b>8.WARRANTY</b> .....	<b>23</b>
<b>9.SYMBOLS DEFINITION</b> .....	<b>25</b>

# 1.OVERVIEW

## INTRODUCTION

Thank you for choosing Figaroo™! The Figaroo wireless, wearable breast pump provides comfort and convenience for effective breast milk expression.

## INDICATIONS FOR USE

The Figaroo wireless, wearable breast pump is intended for use by a single user to express and collect breast milk.

## IMPORTANT SAFETY INFORMATION

Please read this user manual carefully before using your breast pump, and keep it for future reference. Failure to follow these instructions or adhere to the safety information could lead to misuse and potential danger.

## **WARNINGS:**

1. Use the product only for its intended use as described in this pamphlet.
2. This is a personal care product for a single user and should not be shared between users.
3. Only use parts recommended by us.
4. Only use the charger we recommended: 5V  $\equiv$  1A adaptor that meets the requirement of standard IEC 60950.
5. Close supervision is necessary when the product is used near children.
6. Do not wash the pump motor. Wipe with a clean, damp cloth only.
7. Do not immerse the pump motor in water.
8. Do not place the pump in the refrigerator or damp space.
9. All parts must be removed during cleaning or disinfection.
10. Do not use harsh chemicals to clean the parts.
11. Do not place any parts in the microwave.
12. Do not place any parts in the dishwasher.
13. Boiling or high-temperature disinfection of parts should not exceed 5 minutes.
14. After boiling, allow these parts to cool before assembling.
15. Do not drop or insert any object into any openings on the pump.
16. Do not attempt to open or repair the pump motor or charger. Modification of this pump is prohibited.
17. Pump will not work when connected to the charger; always disconnect the pump from the charger before using it.
18. Never operate the product if the cord or plug is damaged or if it is not working properly because it has been dropped, damaged, or immersed in water.

## IMPORTANT USE GUIDELINES

1. Ensure the breast shield, breast shield insert, silicone diaphragm, valve, and milk collector are clean.
2. Ensure the breast shield, breast shield insert, silicone diaphragm, valve, and milk collector are securely assembled and connected to the pump.
3. Before each use visually inspect the individual components for cracks, chips, tears, discoloration, or deterioration. If the pump or parts are damaged, please discontinue use until the parts have been replaced.
4. If you're uncomfortable while pumping, the suction can be broken by inserting a finger between the breast and the breast shield.
5. If irritation or discomfort occurs, discontinue use and contact a lactation specialist or medical professional.

## USAGE AND OPERATING LIFE

1. The Figaroo wireless, wearable breast pump is reusable for a single user, and has an expected operating life of one year.
2. The breast shields, silicone diaphragms, valve and breast shield inserts are reusable and intended for use by a single user.

## PRODUCT DESCRIPTION / WHAT'S INCLUDED

The Figaroo wearable breast pump contains the number of parts and accessories listed here:

Breast shields (x2)



Pump motors (x2)



Silicone diaphragms (x2)



Valves (x4)



USB charging cables (x2)



Milk collectors (x2)



Bra adjustment buckles (x2)

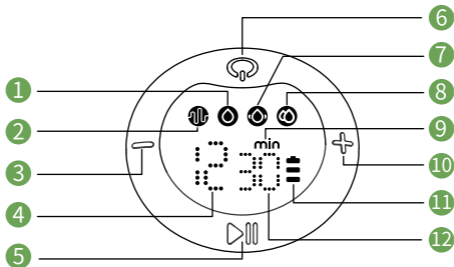


21mm breast shield inserts (x2)



Additional breast shield sizes and spare parts are available for purchase by contacting Figaroo at [www.myfigaroo.com](http://www.myfigaroo.com) or 1-855-288-6181.

## CONTROL PANEL



- |  |                            |
|--|----------------------------|
| 1 Expression mode                        | 7 Massage mode             |
| 2 Stimulation mode                       | 8 Automatic mode           |
| 3 Suction decrease button                | 9 Time/minute              |
| 4 Level display                          | 10 Suction increase button |
| 5 Pause/start button                     | 11 Power display           |
| 6 Power button/<br>mode selection button | 12 Time display            |

## 2.GETTING STARTED

### ASSEMBLY

To assemble the pump, follow the steps below.

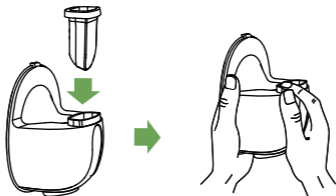
#### ⚠ CAUTIONS:

- Ensure that you clean and disinfect the pump according to the instructions in this user manual.
- Wash hands thoroughly before you assemble clean pump parts and motor.
- Assemble the pump correctly, following the guidelines provided in this user manual.
- To prevent leakage, remove any residue around the rim before assembly.

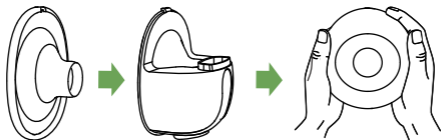
1. Install the valve onto the milk collector, ensuring proper installation direction.



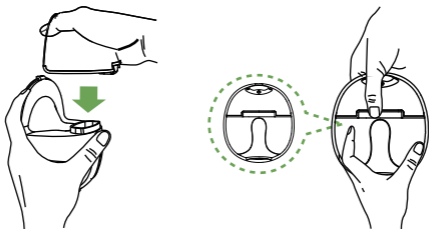
2. Place the silicone diaphragm into the milk collector and press down firmly to ensure the edges are securely fastened for a perfect seal.



3. To install the breast shield onto the milk collector, align the diversion groove on the breast shield with the backflow groove on the milk collector. Then, press the edges down with both hands to ensure a secure seal.



4. Attach the pump motor of the breast pump to the milk collector by aligning the notch beneath the pump motor with the silicone diaphragm. Press down to secure it in place, ensuring a complete seal.



**⚠ WARNING**

The breast pump does not function when connected to the charger.

## 3.PUMPING

### BEFORE PUMPING

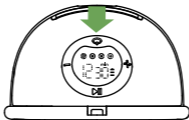
1. Wash your hands thoroughly with soap and water.
2. Relax in a comfortable chair, leaning slightly forward (use cushions to support your back).
3. Check the silicone diaphragm, valve, and other parts before use. If parts are damaged, discontinue use until the parts have been replaced.
4. Clean pump dials, power switch, and countertop with disinfectant wipes.

### TO BEGIN PUMPING

1. Firmly press the breast shield against your breast, ensuring there are no gaps and that your nipples are centered. Keep the pump upright, and take care not to distort the position of the product or your chest; otherwise, the breast pump will lose suction.



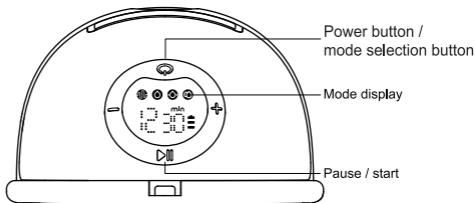
2. Long-press the power button to start the breast pump.



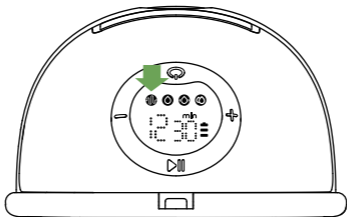
### **i** TIP:

The breast pump is equipped with a memory function that remembers the settings for stimulation mode, expression mode, and massage mode from your most recent use.

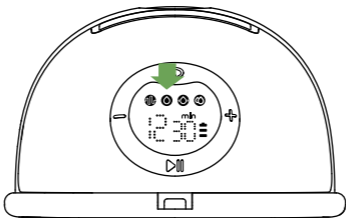
3. You can short-press the "▶||" button to start or pause the breast pump. After starting, short press the power/mode selection button "⏻" to switch modes. There are four modes available for you to choose from: stimulation mode, expression mode, massage mode, and automatic mode. When the "🔊" indicator is lit, it indicates stimulation mode; when "👁" is lit, it signifies expression mode; when "🌀" is lit, it denotes massage mode; and when "👤" is lit, it indicates automatic mode.



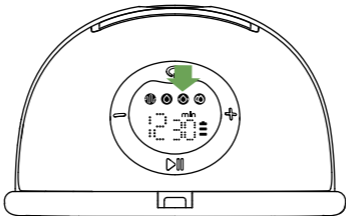
4. Short-press the power/mode selection button "⏻" to switch to stimulation mode "🔊". This mode offers 12 levels for you to choose from. Use the "+" or "-" buttons to select the level that best suits your comfort. Stimulation mode helps stimulate your nipple to initiate a let-down.



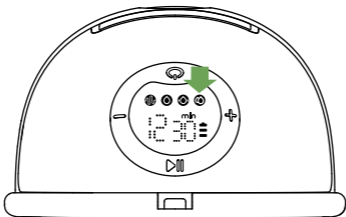
5. Short-press the power/mode selection button "⏻" to switch to expression mode "🌀". This mode includes 12 levels, allowing you to press the "+" and "-" buttons to choose the suction power that feels most comfortable for you.



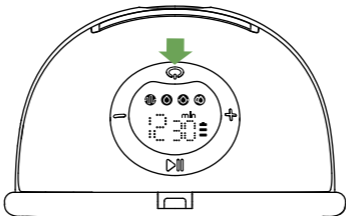
6. Short-press the power/mode selection button "⏻" to switch to massage mode "🌀". This mode includes 12 levels, allowing you to press the "+" and "-" buttons to choose the suction power that feels most comfortable for you.



7. Short-press the power/mode selection button "⏻" to switch again, and display the automatic mode symbol "🔄". This mode offers 12 levels. When switching to automatic mode, the device defaults to the first level, increasing by level 1 every 15 seconds until it reaches level 12. If you press the "+" or "-" button while in the automatic mode, the device will switch to manual mode and remain at the selected level. This mode can help alleviate breast discomforts such as swelling in the breasts which may occur during postpartum breastfeeding.



8. Long-press the power/mode selection button "⏻" to switch to turn off the breast pump.

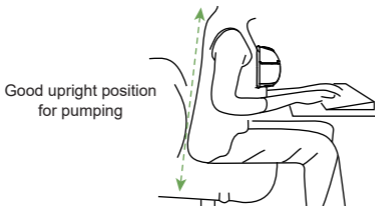


## **i TIPS:**

1. Getting used to pumping may take some time. If your breast milk doesn't flow right away, make sure your pump is adjusted properly.
2. During your first few uses of the breast pump, you may need to use a higher expression mode to stimulate milk flow.
3. When necessary, you can also use stimulation mode to help with expression.
4. While expressing, you can switch between stimulation and expression modes by pressing the mode selection button for optimal results.
5. You do not need to use all levels; only use the levels that feel comfortable.
6. This model has a built-in memory function. When you turn the pump on again, the pump shifts to the pumping mode you used last time.
7. The suction level is not retained in automatic mode. If the pump is in automatic mode and no buttons are pressed, the level will automatically increase to level 9 at 15-second intervals. If you press a button during this time, the automatic level increase will stop.
8. If you regularly express more than 150mL per session on each breast, stop expressing when you reach the 150mL mark and pour the breast milk into a bottle or storage bag to prevent overfilling and spillage.
9. After the machine is paused, it will automatically shut down if no buttons are pressed for 5 minutes.
10. The breast pump will automatically stop after 30 minutes of operation.

## PUMPING POSITION

Relax and sit in a comfortable chair. As illustrated below, lean slightly forward (use a cushion for back support) and keep the breast pump and breast cup upright.



## BRA BUCKLE INSTRUCTIONS

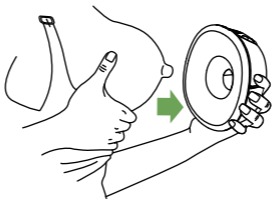
Adjust the length of the bra straps to make suction more comfortable. Hang one end of the bra adjustment buckle on the inside buckle of the nursing bra. Adjust the length of the other end of the bra adjustment buckle to fit properly.



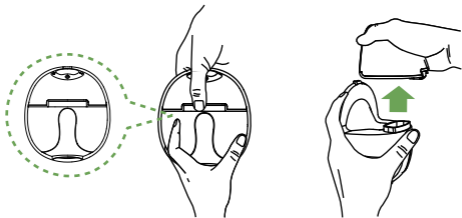
## 4. ENDING YOUR SESSION

After you finish pumping, carefully remove the breast pump from your breast while keeping it upright. Detach the motor part, then hold the milk collector to pour the breast milk into a bottle or breast milk storage bag. Ensure that the gap of the milk collector aligns with the mouth of the bottle or breast milk storage bag to prevent any spillage.

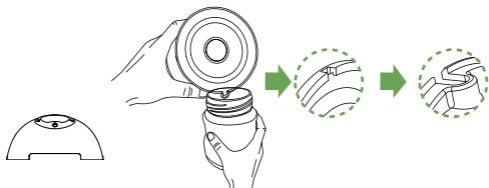
1. When you finish expressing, long-press the power button to switch off and break the seal between the breast and the pump funnel with your finger, and then carefully remove the pump from your breast.



2. Separate the milk collector from the pump motor. Clean the other used parts according to the instructions.



3. Pour the milk into a storage bottle or breast milk storage bag, ensuring that the slot feature is aligned with the bottle or bag.



### **⚠ WARNING:**

Be sure to remove the pump motor first before pouring the milk.

### **i TIPS:**

1. Do not continue pumping for more than 5 minutes at a time if you are unable to express any milk. Try expressing again at another time during the day.
2. If the process becomes uncomfortable or painful, stop using the pump and consult with a lactation specialist or medical professional.
3. Never tilt the breast pump once the milk has reached the maximum line on the milk collector as this can cause spillage.
4. After expressing, remove the milk collector from the pump body and pour the milk into a bottle for storage and sealing.

## 5.CLEANING, DISINFECTION & STORAGE

### CLEANING AND DISINFECTION

	First Time Use	After Each Use
Pump motor	Wipe with a clean damp cloth with 70% ethyl alcohol or isopropyl alcohol as needed. Do not immerse the pump motor in water.	Wipe with a clean damp cloth with 70% ethyl alcohol or isopropyl alcohol as needed. Do not immerse the pump motor in water.
Breast shield, silicone diaphragm, breast shield insert, valve, and milk collector	Boil in water for 5 minutes. Do not microwave or place breast shield, breast shield insert, silicone diaphragm, valve, or milk collector in dishwasher.	Clean with mild dishwashing soap and clean water.

### WARNINGS:

- Be careful when removing and cleaning the valve; if the valve is damaged, the breast pump will not function properly.
- To clean the valve, gently rub it in warm water with a few drops of cleaning liquid.
- Do not insert any objects into the valve, which may cause damage.

### CLEAN BY HAND

- Place the pump parts in a clean wash basin used only for infant feeding items. Do not place them directly in the sink.
- Add soap and hot water to the basin.
- Scrub the items using a clean brush used exclusively for infant feeding items.
- Rinse the parts by holding them under running water or by submerging them in fresh water in a separate basin.
- Allow the parts to air-dry thoroughly
- Place the pump parts, the wash basin, and the bottle brush on a clean, unused paper towel in a protected area to keep them free from dust and dirt. Avoid drying with a dish towel.
- After each use, thoroughly clean the wash basin and bottle brush, rinse well, and allow them to air dry. Additionally, wash these items by hand every few days for proper maintenance.

## MILK STORAGE GUIDELINES

1. Only store breast milk collected using sterilized breast pumps.
2. The extracted milk can be placed in a clean, sterilized milk storage bag or a milk bottle with a sealing cushion, and should be immediately placed in the refrigerator or in the freezer for storage.

## BREAST MILK COLD STORAGE

1. Do not freeze, thaw, and then refreeze breast milk repeatedly.
2. Do not mix fresh breast milk with previously frozen breast milk.
3. Be sure to discard any breast milk left after feeding.
4. Extracted milk can be refrigerated for up to 48 hours in the refrigerator or frozen for three months. Ensure that the milk bottle or storage bag is labeled clearly with the date and time of when you pumped.

## UNFREEZE BREAST MILK

Place the frozen breast milk in the refrigerator for one night to thaw. After thawing, breast milk must be consumed within 24 hours. It is important not to microwave the breast milk or refreeze it once it has thawed.

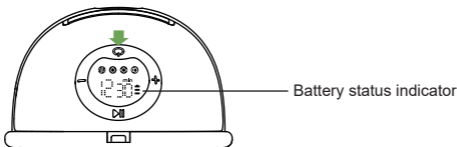
## BREAST MILK HEATING

1. Place the baby bottle upright in a bowl of hot water, or use a baby bottle warmer to heat the breast milk safely and quickly.
2. **IMPORTANT:** Before feeding your baby, always check the temperature of the breast milk.
3. Do not use a microwave oven to heat breast milk, as this may destroy essential nutrients and antibodies.
4. Additionally, uneven heating can result in hotspots, which may cause burns.
5. Do not immerse the breast milk bottle in boiling water. Doing so may cause the bottle to rupture or crack.

## 6.CHARGING YOUR BREAST PUMP

Check the battery indicator after each use by pressing the power button. If the battery is low, charge the pump using the USB cable included in your pump box.

1. Plug the charging cable into your adapter and the pump's port.
2. Connect the adapter to a standard electrical outlet.
3. Once the pump is fully charged, disconnect the charger from the pump and unplug from the electrical outlet.



### BATTERY STATUS INDICATOR ILLUSTRATION

Battery Status Indicator Displayed	Remaining Pump Time Left
Three bars are always on	135 minutes
Two bars are always on	90 minutes
One bar is always on	45 minutes
One bar flashing	5 minutes

### CHARGING TIMES

A full charge takes approximately 90 minutes, and the power indicator will display three bars when fully charged.

### **WARNING:**

Only use the adapter we recommend: a certified DC 5V = 1A adapter that complies with the IEC 60950 standard.

## **i** TIPS:

1. After switching off the breast pump, remove the pump motor from the milk collector before charging the motor.
2. This breast pump features a lithium-ion rechargeable battery, allowing you to use it without the adapter connected.
3. To protect the pump, if the pump motor is operating and the DC power is connected, the pump motor will stop working and enter charging mode.
4. The device has a three-level battery display. When the power is off or no DC power is connected, the battery indicator will not display.
5. When the power is off and DC power is connected the battery indicator lights up. While charging, the battery indicator will flash, and when fully charged, all three indicator lights will remain on.
6. When the device is operating without DC power connected, the battery indicator will remain on if the battery is full, and it will flash if the power is low.
7. During charging, the battery indicator will flash.
8. Once the battery is fully charged, all three indicator lights will remain on.

## TIPS TO HELP YOU SUCCEED

The Figaroo wireless, wearable breast pump is designed to be easy to use. With a little practice, you should quickly become accustomed to it.

1. Choose a time when you are not rushed and can avoid interruptions.
2. Having your baby or a photograph of your baby nearby can help stimulate milk production.
3. Before expressing milk, place a warm towel on your breast and lightly massage it for a few minutes. This can stimulate milk to flow and alleviate discomfort.
4. Warmth and relaxation can promote milk flow. Consider pumping after a warm bath or shower.
5. Try expressing from one breast while your baby is feeding from the other, or continue expressing just after a feed.
6. Repositioning the pump on your breast from time to time can help stimulate milk flow.

## 7.TROUBLESHOOTING

The information below summarizes the most common issues you may encounter with the Figaroo wireless, wearable breast pump. If you are unable to resolve the problem using the information provided below, please contact Figaroo directly by calling 1-855-288-6181.

Problem	Possible Issues
Lack of suction	<ul style="list-style-type: none"><li>◆ Check the silicone diaphragm, valve, and other parts before use. If parts are damaged, please discontinue use until they have been replaced.</li><li>◆ Ensure that the pump is assembled correctly according to the instructions in this manual.</li><li>◆ Low air pressure in your area may affect the suction performance.</li></ul>
No milk being expressed	<ul style="list-style-type: none"><li>◆ Ensure the pump is properly assembled and that suction is being generated correctly.</li><li>◆ Press the breast shield firmly against your breast, ensuring there are no gaps, and make sure your nipples are properly centered. Keep the shield upright at all times.</li><li>◆ Warmth and relaxation can help stimulate milk flow. With practice, expressing may become easier and more effective.</li><li>◆ Refer to the “Tips to Help You Succeed” section (pg19).</li></ul>
Pain in the breast area when expressing	<ul style="list-style-type: none"><li>◆ Check modes and suction levels. You do not need to use all levels, only the levels that are comfortable for you.</li><li>◆ It is recommended to limit each pumping session to 20-30 minutes.</li><li>◆ If your nipple rubs against the sides of the breast shield, causing chafing, you may want to consider using a larger breast shield or an insert that fits better.</li></ul>

Problem	Possible Issues
Leakage of breast milk during use	<ul style="list-style-type: none"> <li>◆ Ensure the pump is assembled correctly and that a perfect seal is achieved.</li> <li>◆ Check that the silicone diaphragm and valve are not damaged or deformed and that there are no foreign objects trapped in the breast shield.</li> <li>◆ Once the milk has reached the maximum level, make sure to pour the milk into a storage bottle or bag to prevent leakage.</li> <li>◆ Check your pumping position, ensure to keep the breast pump and breast cup upright.</li> </ul>
Unable to charge	<ul style="list-style-type: none"> <li>◆ Ensure to use the 5V <math>\equiv</math> 1A adapter and the original Type-C charger.</li> <li>◆ Check the charging port for foreign objects and the charging line for damage.</li> <li>◆ If any milk has entered the motor, please stop pump use. Do not attempt to pump again until the milk is completely dry.</li> </ul>
Unable to turn on	<ul style="list-style-type: none"> <li>◆ Check the battery indicator by pressing the power button. If the battery is low, charge the pump.</li> <li>◆ Ensure that the pump is not plugged into the charger. The breast pump will not power on when plugged in.</li> </ul>

## 8.WARRANTY

We encourage all Figaroo wireless, wearable breast pump owners to register their breast pumps with Figaroo. This registration process guarantees the proper recording and activation of your warranty and ensures that you remain well-informed of exclusive promotions and updates pertaining to new products or enhanced features.

### **Figaroo Product Registration**

**You can complete your warranty registration at [myfigaroo.com/warrantyregistration](https://myfigaroo.com/warrantyregistration)**

Under our limited warranty, we warrant to the original consumer purchaser (the "purchaser") to be free from defects in material and workmanship for the period of 12 months from the date of the pump's purchase (the "Warranty Period"). This limited warranty does not cover damage caused by accident, misuse, normal wear and tear, improper use, unauthorized maintenance or repair, or failure to follow written instructions for use. The pump cannot be submerged in water, washed, placed in the refrigerator or freezer, used during takeoff, or landing when traveling on an airplane, or used with any charger that is not recommended by us. The breast shield, breast shield insert, silicone diaphragm, and valve cannot be placed in the microwave or microwave sterilizer bags. Doing so voids this limited warranty.

Warranty coverage terminates if you sell or otherwise transfer this product to another person. This warranty gives you specific legal rights and you may also have other rights, which vary, by location. We make no express warranty of any kind regarding the product other than those warranties explicitly set forth herein.

Any implied warranty, including any implied warranty of merchantability, non-infringement, quiet enjoyment, or any implied warranty of fitness for a particular purpose, to the extent permitted by law, shall be limited in duration to a period of 90 days from the date of purchase by the original purchaser.

In the event we find the product does not meet the above limited warranty in the Warranty Period, as the purchaser's sole and exclusive remedy, we will repair or, at the option of the manufacturer or distributor, replace this product without charge for such replacement or parts or labor.

## **i** NOTE:

The purchaser shall bear all expenses for returning this product to us. This limited warranty does not apply to any product that has been used commercially, or subjected to misuse, abuse, or alteration.

Only our replacement parts should be used with our breastfeeding products. Improper or incorrectly performed maintenance or repair, or use of replacement parts not supplied by Figaroo may invalidate this limited warranty.

To the extent permitted by law, Figaroo shall not be liable for any indirect, special, punitive, exemplary incidental or consequential damages including, but not limited to, replacement costs resulting from the breach of any written or implied warranty.

If you wish to make a claim under this limited warranty, you must return the product to us prepaid, together with our dated bill of sale or other dated proof of purchase and a brief statement of the problem, along with a Returned Goods Authorization number.

You may obtain the appropriate Authorization number and shipping address by emailing us at [orders@myfigaroo.com](mailto:orders@myfigaroo.com). Items returned without an associated Returned Goods Authorization Number will be returned to the sender.

To obtain the address to return goods or a Returned Goods Authorization Number contact the Customer Care Team at 1-855-288-6181. We recommend recording your serial number here when you first open your pump for easy reference when contacting our Customer Care Team. The serial number can be found on the pump interior or packing box.

## 9.SYMBOLS DEFINITION

The warning symbol identifies all instructions that are important for safety. Failure to observe these instructions can lead to injury or damage to the breast pump. When used in conjunction with the following words, the warning symbol stands for:

### **WARNINGS:**

Can lead to minor injury.

### **CAUTIONS:**

Useful or important information that is not related to safety.









### **TIPS:**






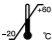

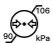


Useful or important information that is not related to safety.





### **NOTE:**

Can lead to material damage.

## PUMP CONTROL INTERFACE

BUTTON	FUNCTION
	POWER BUTTON / MODE SELECTION BUTTON
	START / PAUSE
	STIMULATION MODE
	EXPRESSION MODE
	AUTOMATIC MODE
	MASSAGE MODE
	LEVEL DOWN = DECREASE SUCTION
	LEVEL UP = INCREASE SUCTION

SYMBOL	DEFINITION
	This symbol indicates the manufacturer.
	This symbol indicates to keep the device dry.
	This symbol indicates to handle the fragile device with care.
	This symbol indicates to keep the device away from sunlight.
	This symbol indicates to not dispose of the device together with unsorted municipal waste (for EU only).
	This symbol indicates the temperature limitation for operation, transport, and storage.
	This symbol indicates the humidity limitation for operation, transport, and storage.
	This symbol indicates the atmospheric pressure limitation for operation, transport, and storage.
	This symbol indicates that the user needs to consult the instructions for use.
	This symbol indicates that a manual/booklet must be read.

SYMBOL	DEFINITION
	<p>This symbol indicates that the packaging contains products intended to come in contact with food according to the regulation 1935/2004.</p>
	<p>The symbol indicates recyclable.</p>
	<p>This symbol indicates that the material is part of a recovery/recycling process.</p>
	<p>This symbol indicates the unique device identifier.</p>